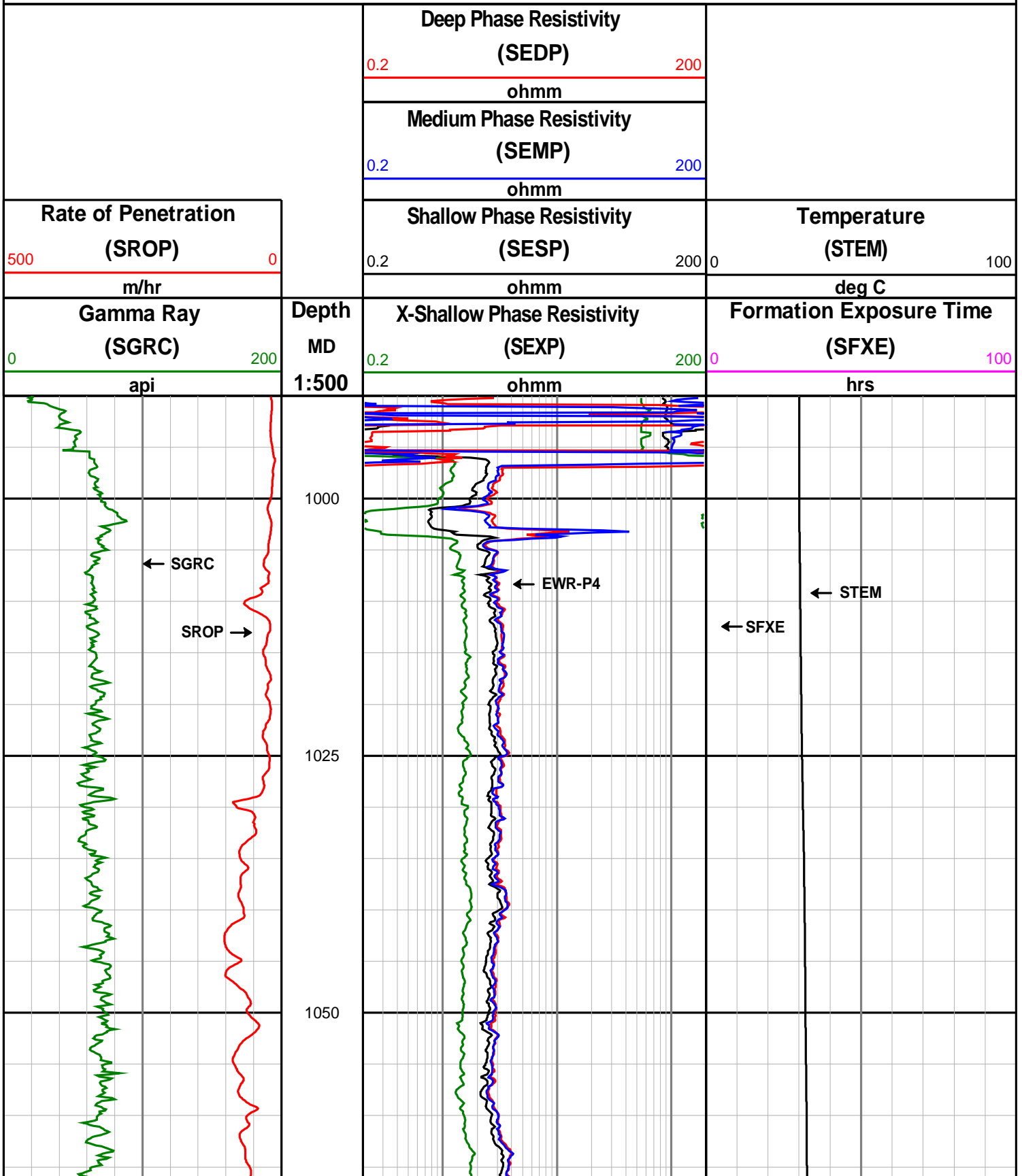
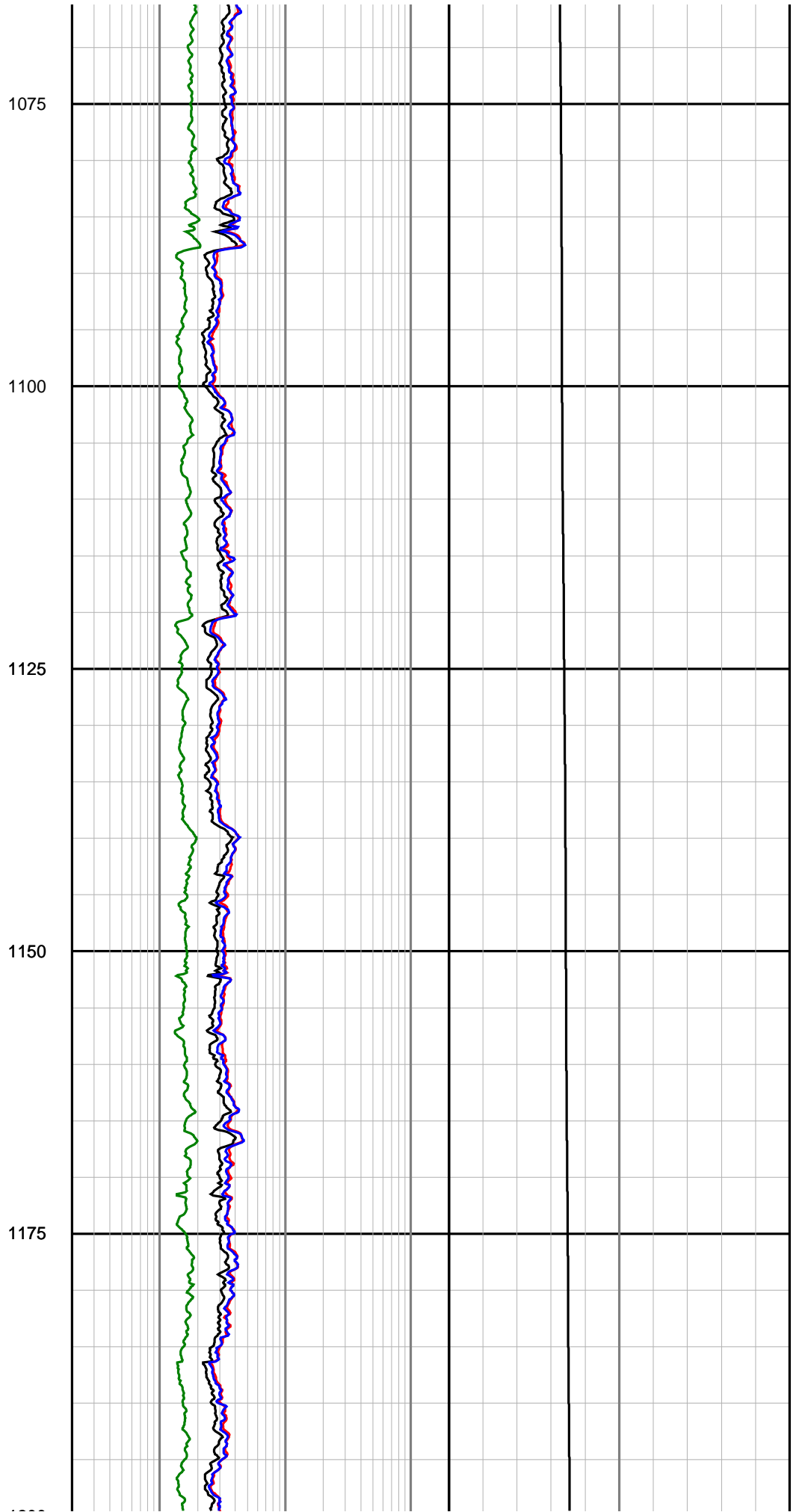
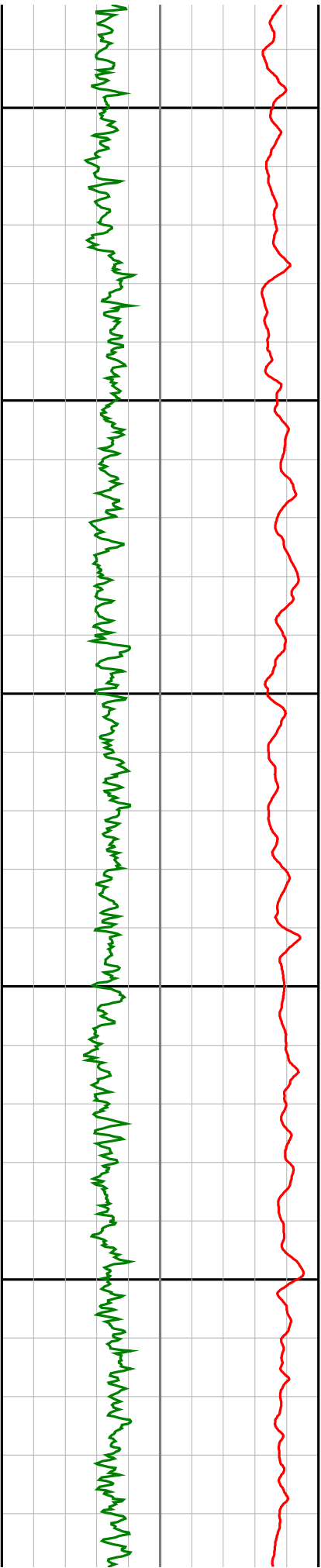


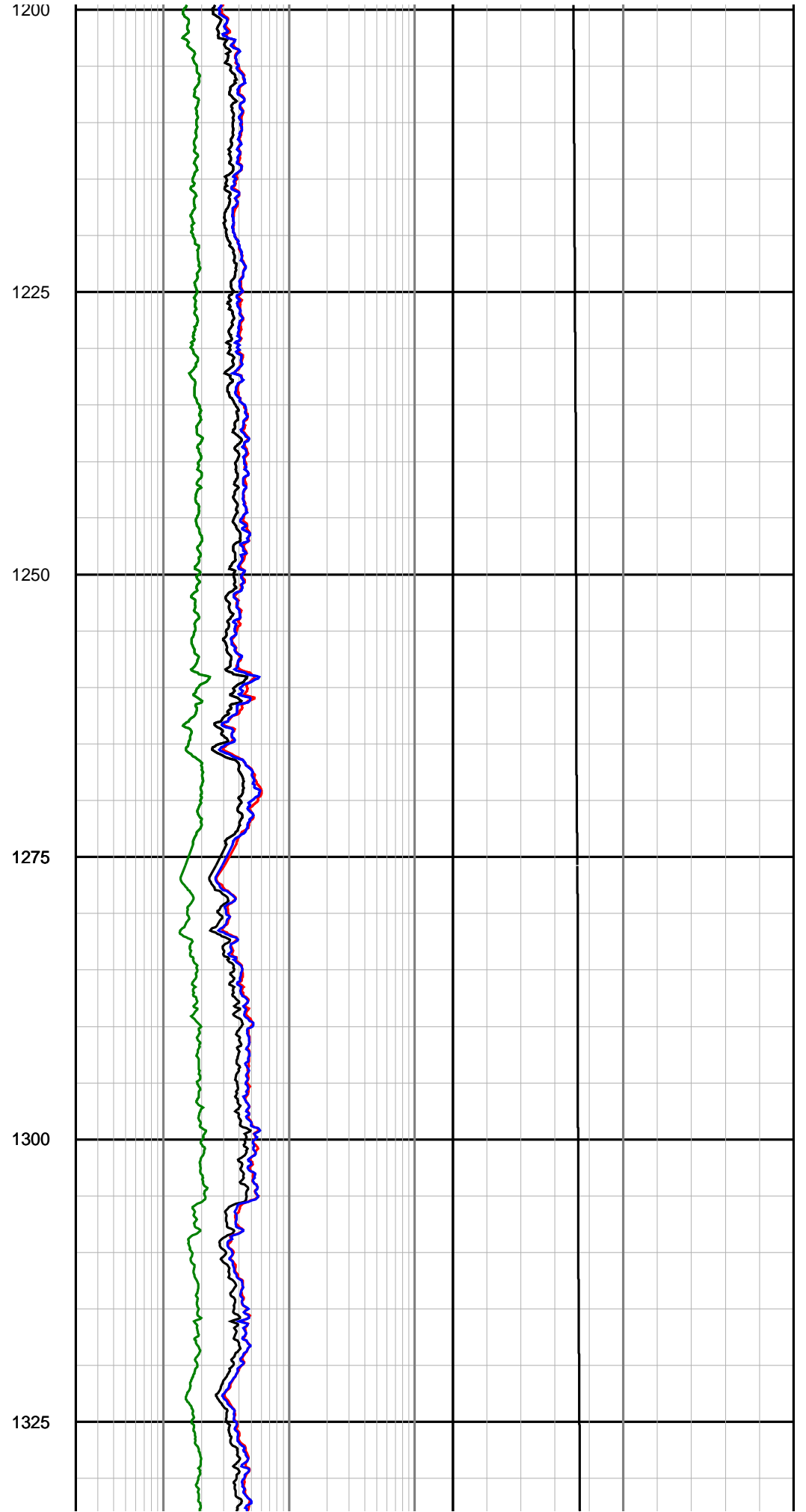
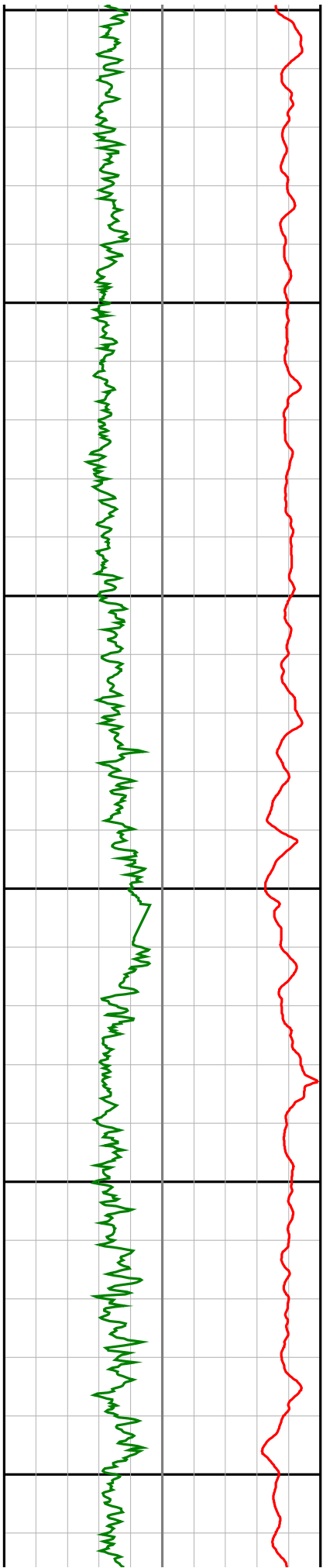
Anzon Australia Ltd

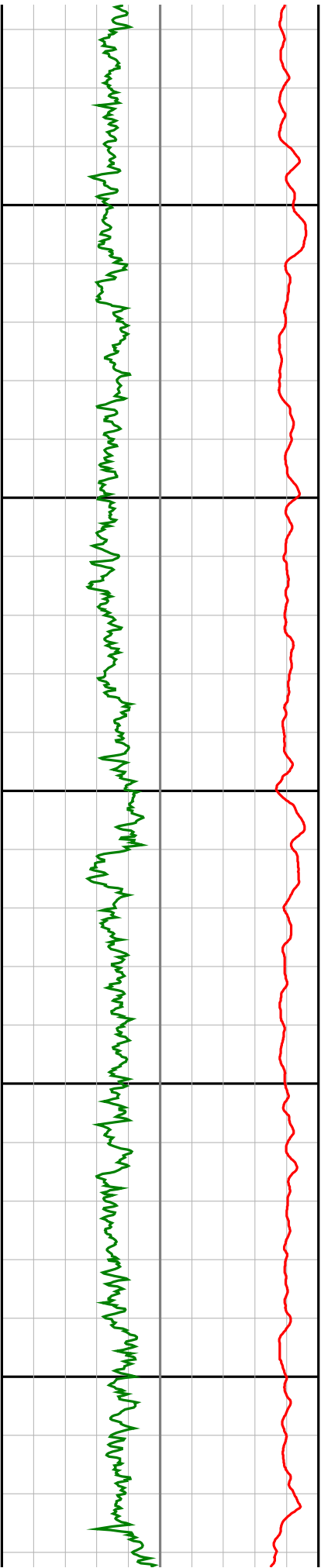
Basker-2

LWD Realtime & Recorded Log - 12 1/4" Hole









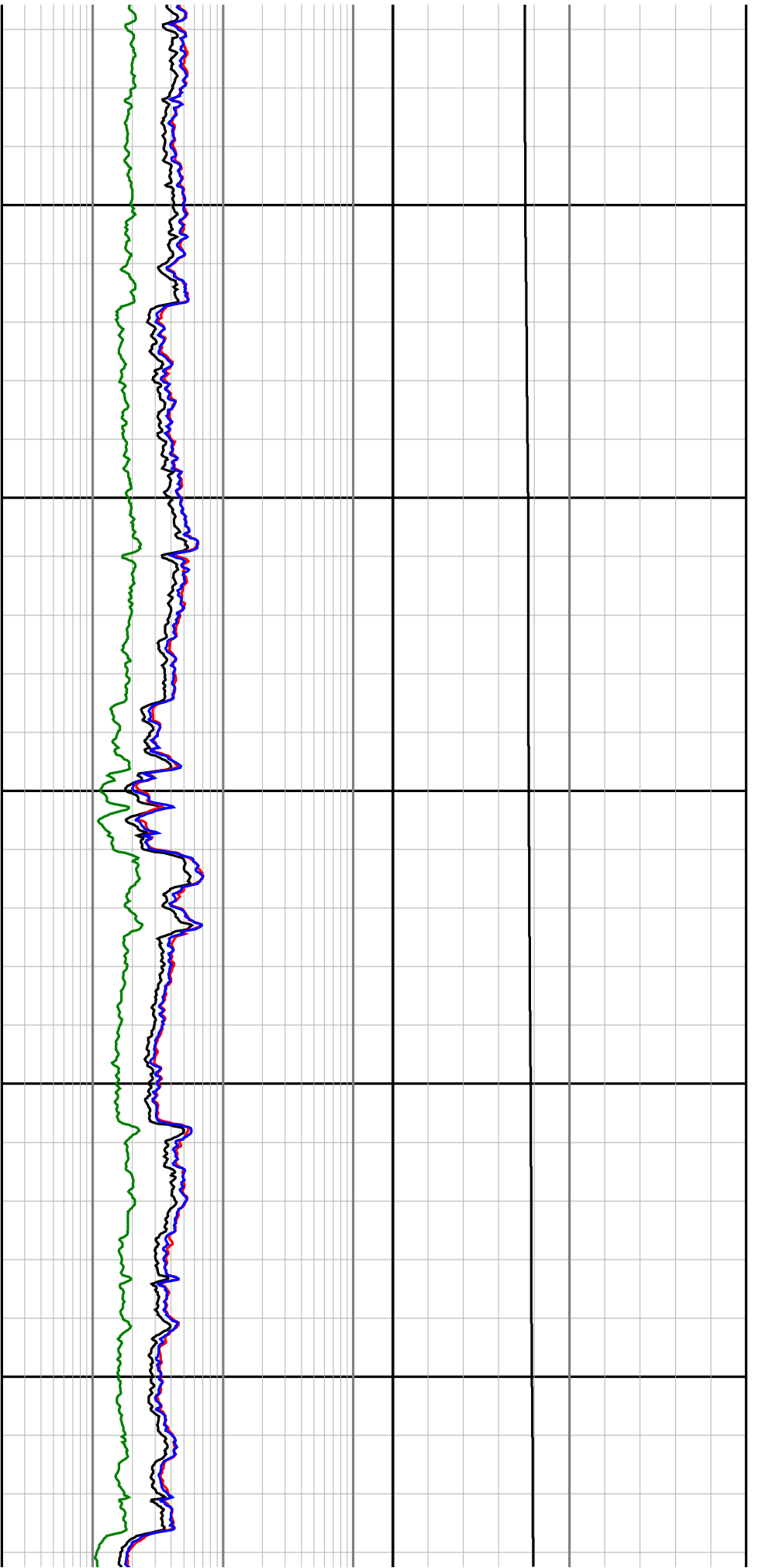
1350

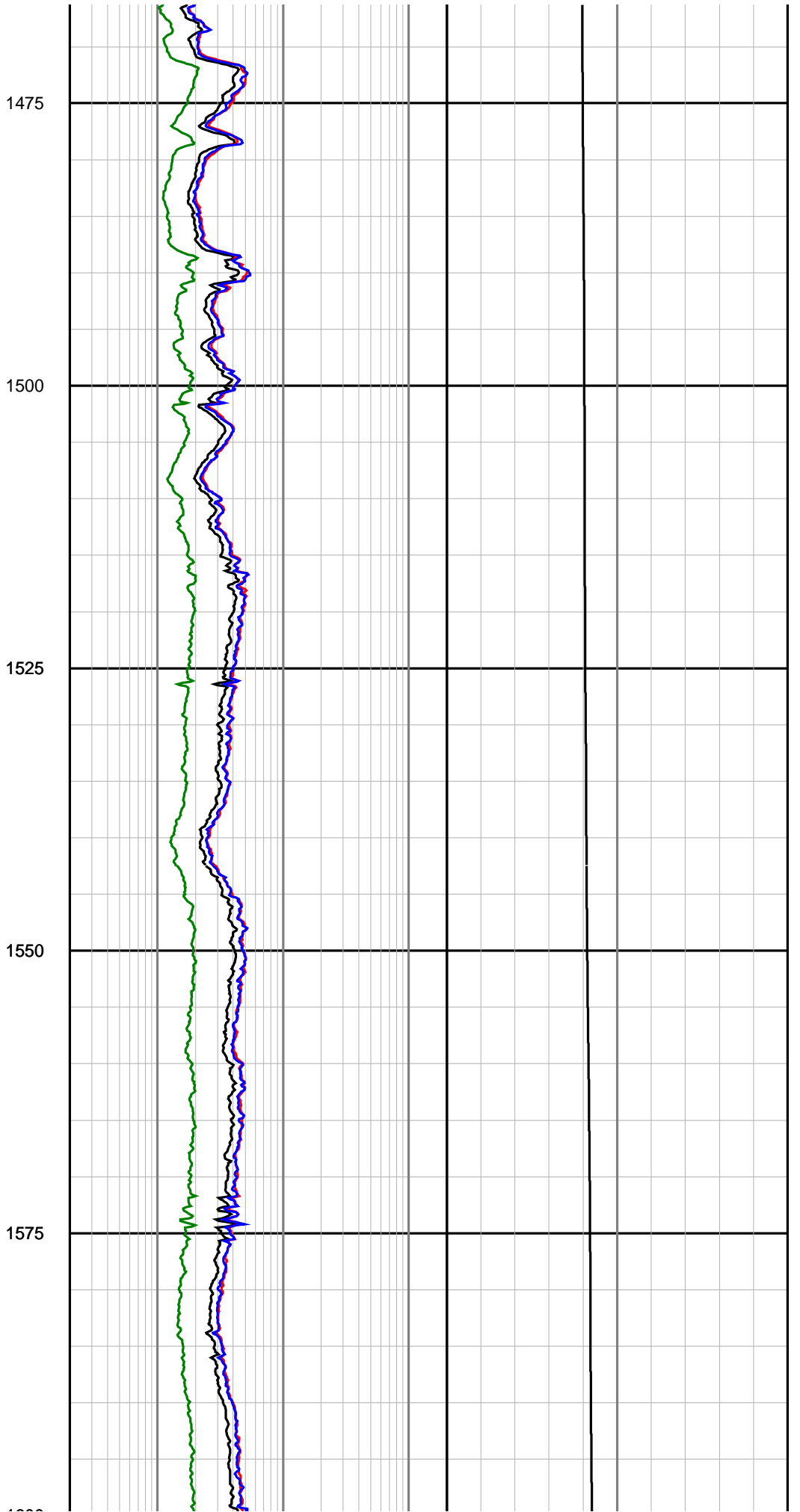
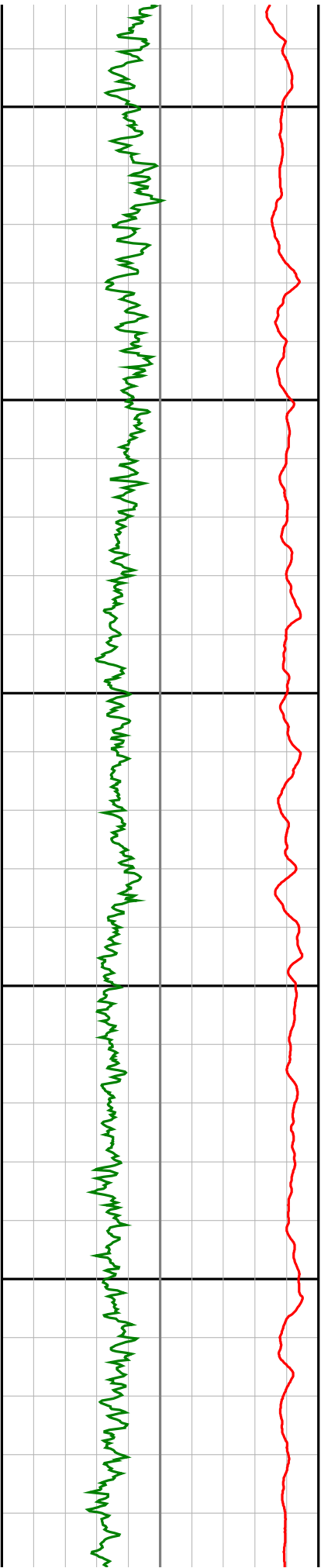
1375

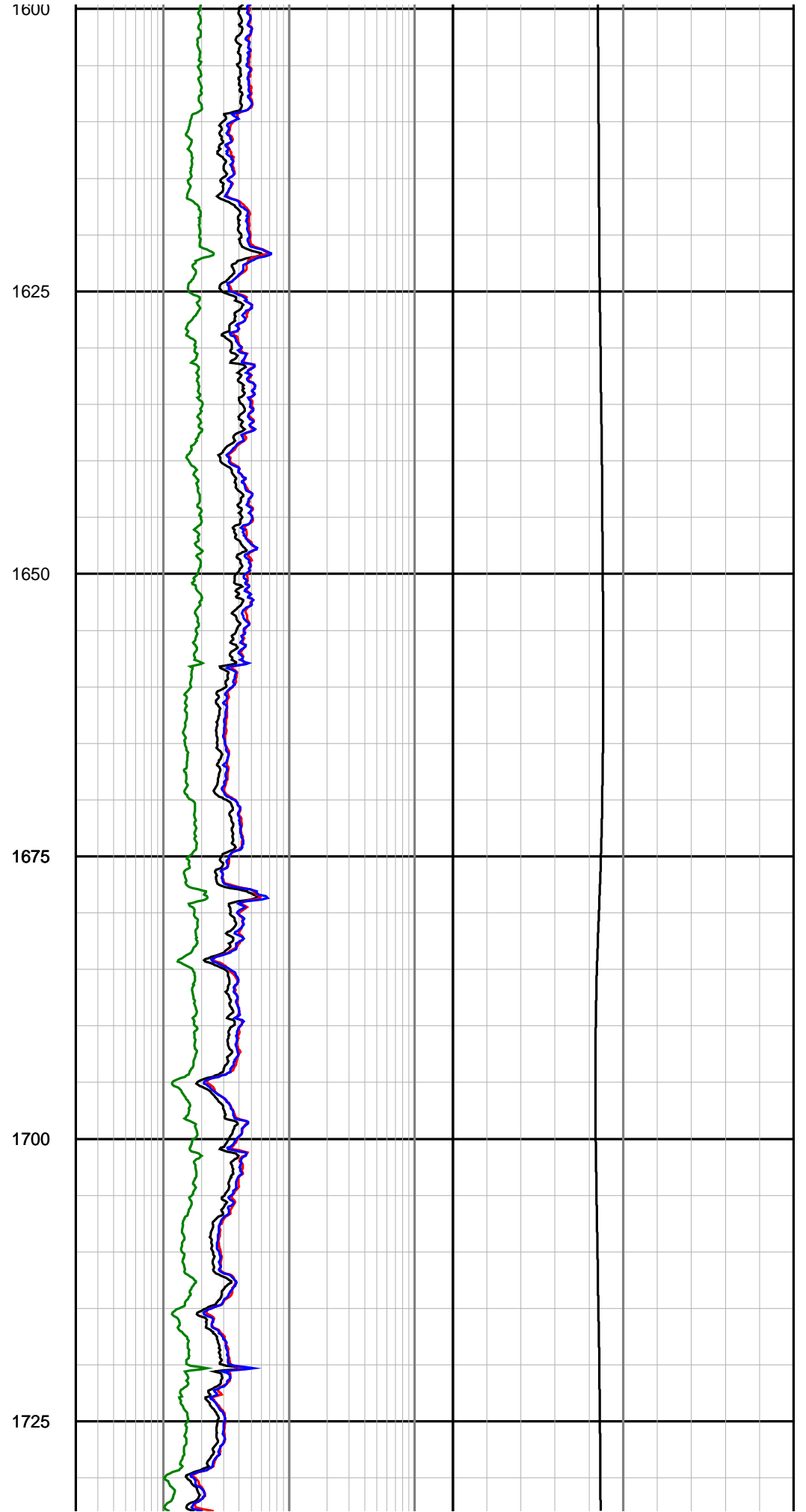
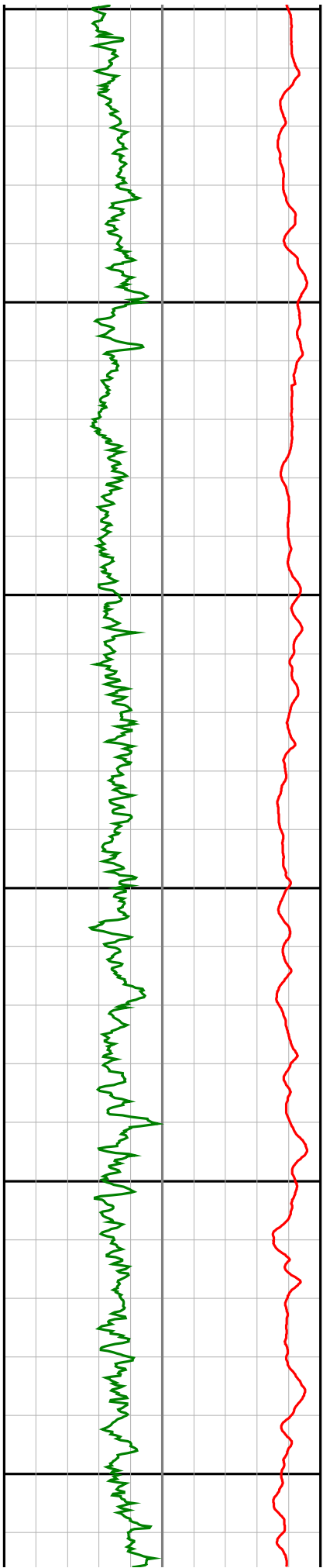
1400

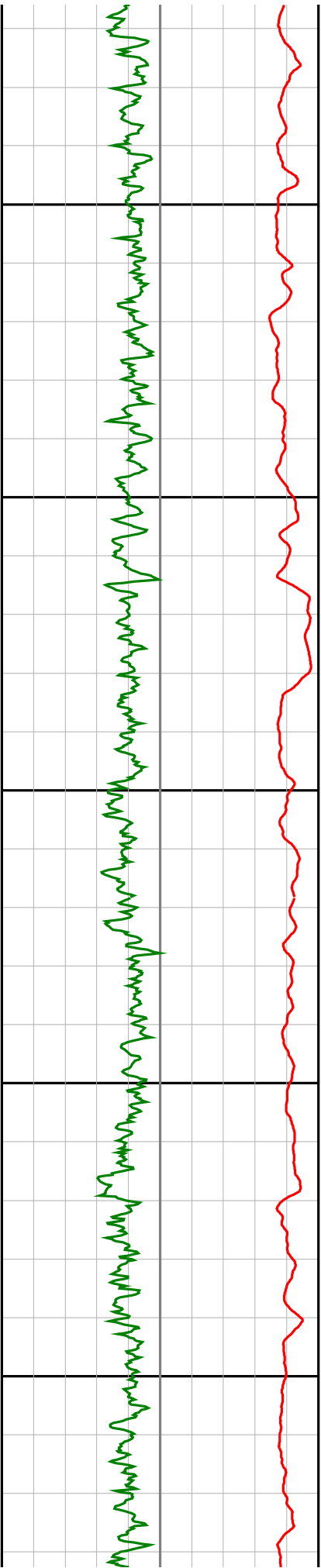
1425

1450









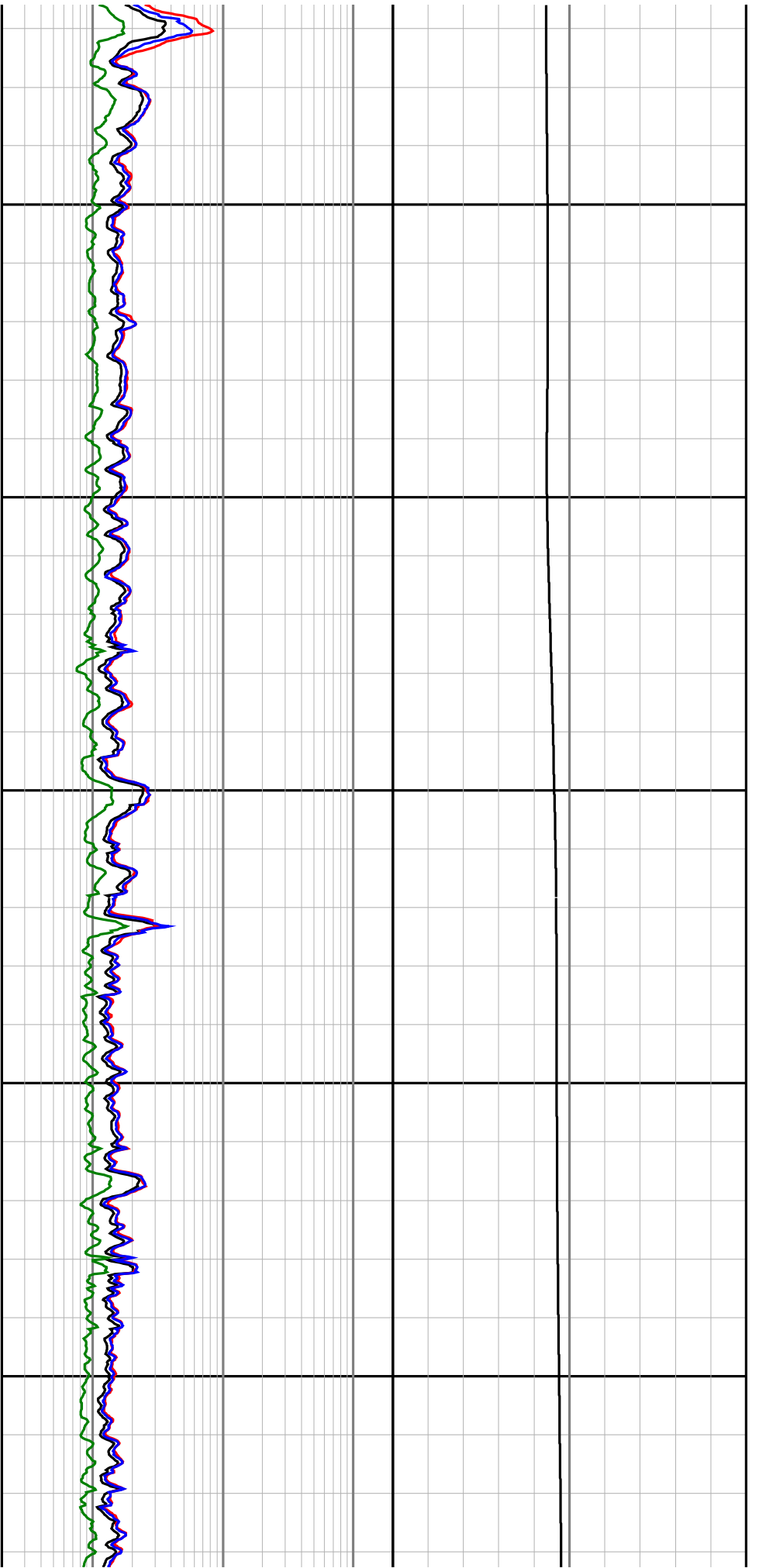
1750

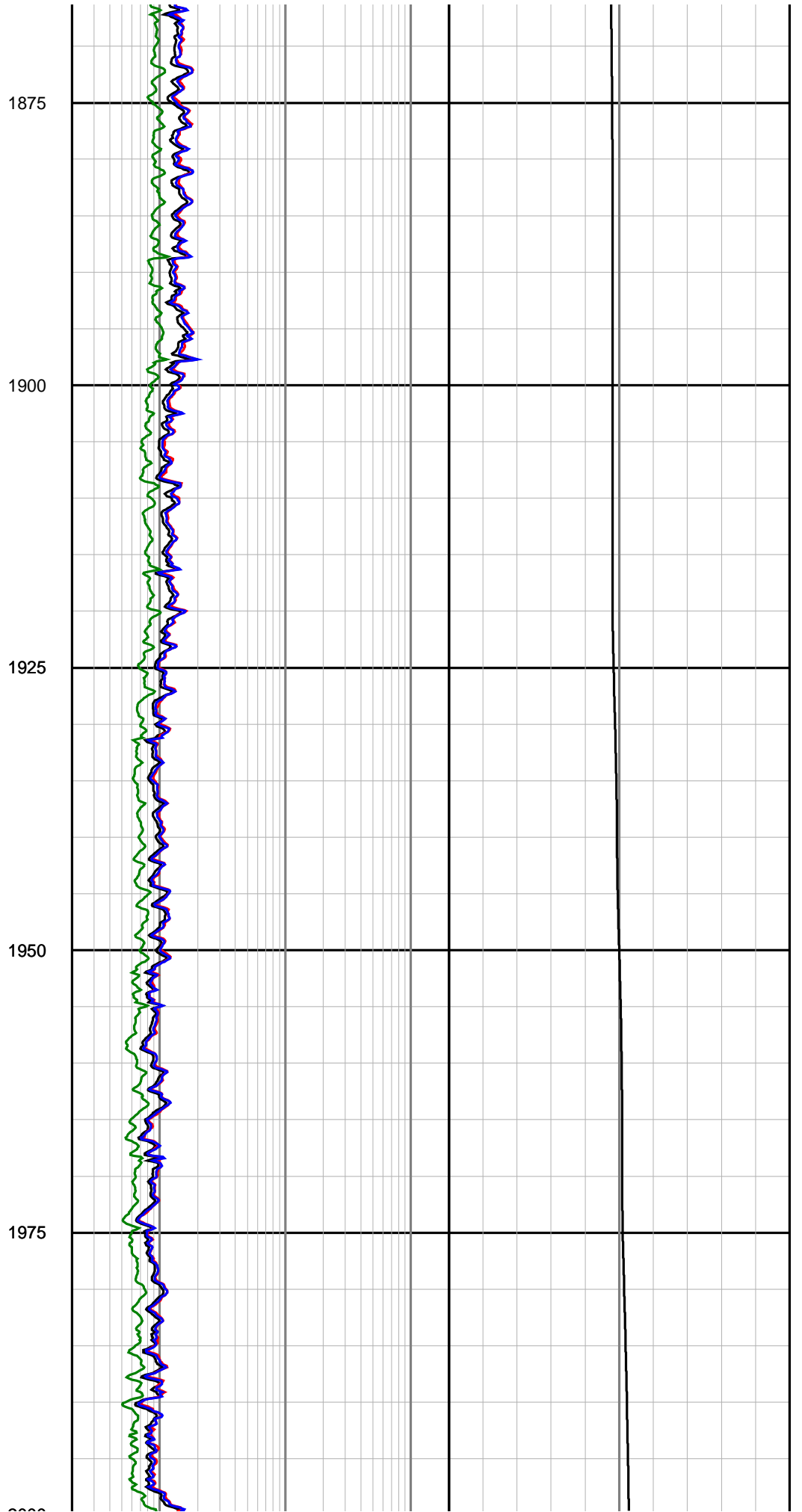
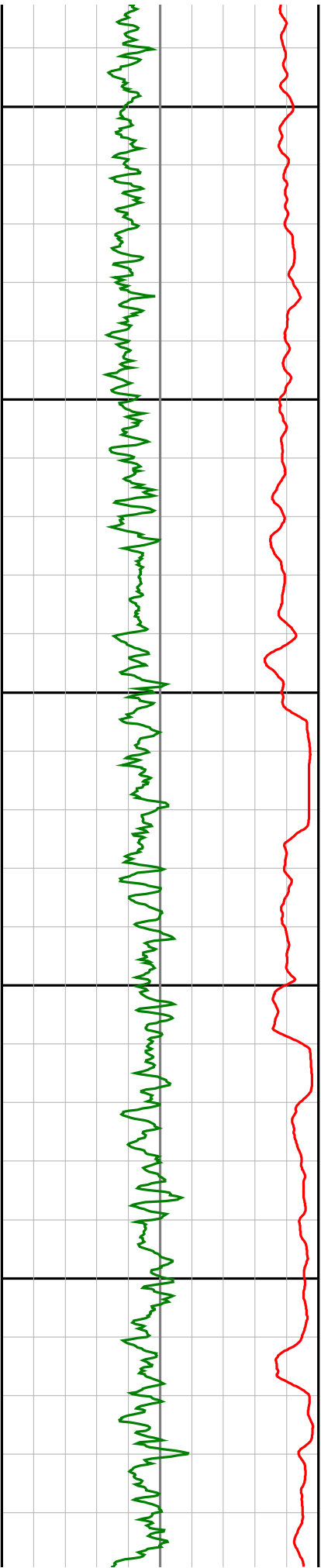
1775

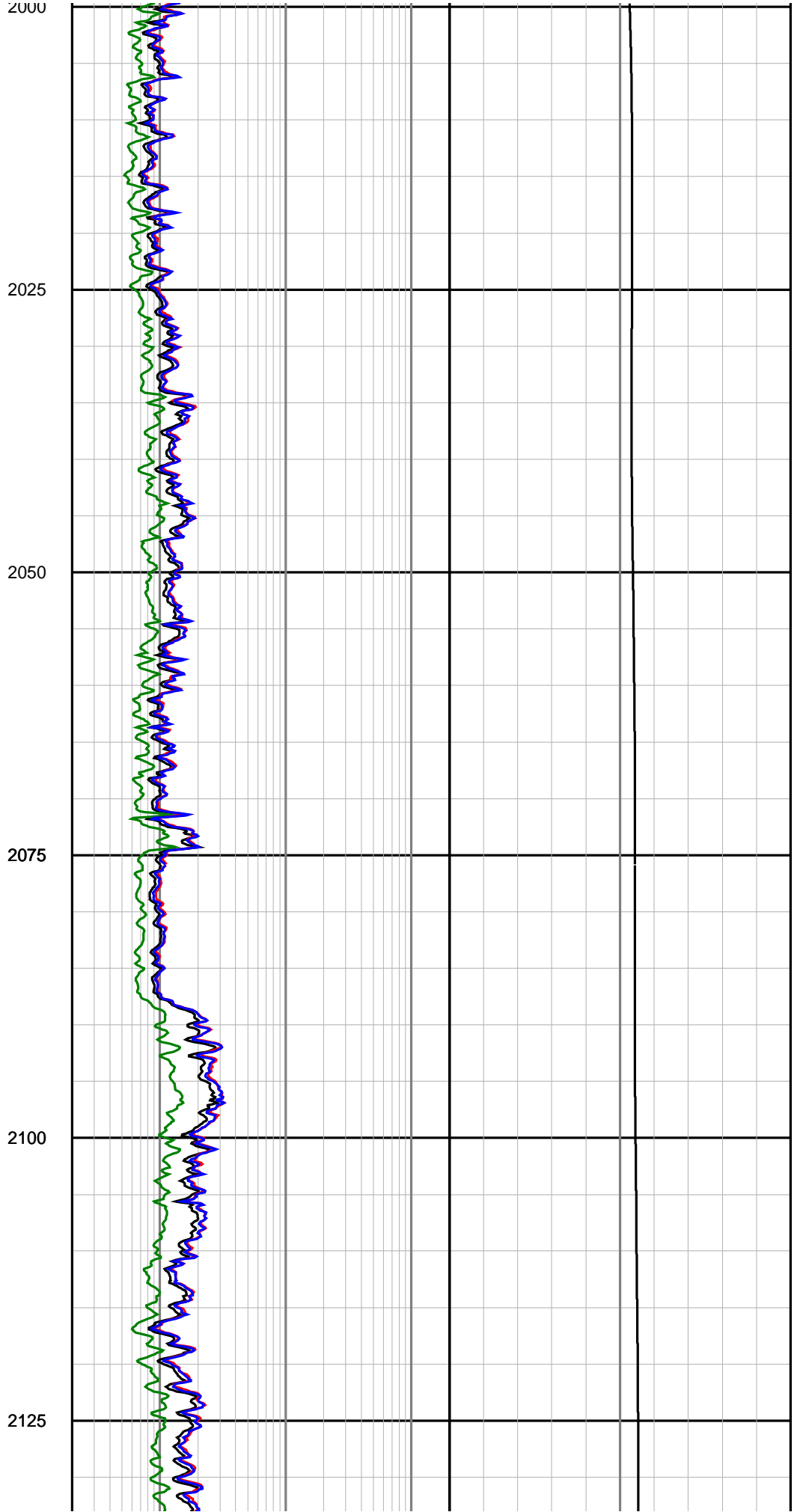
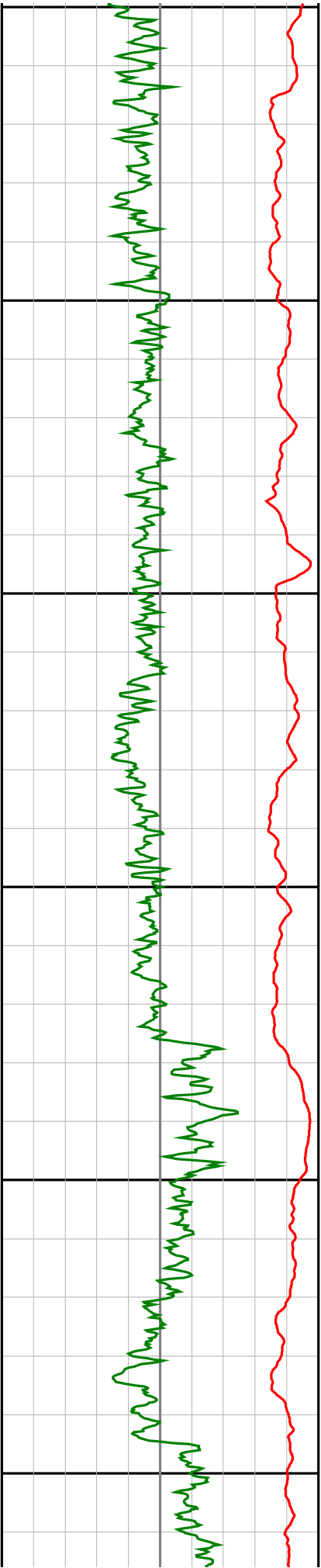
1800

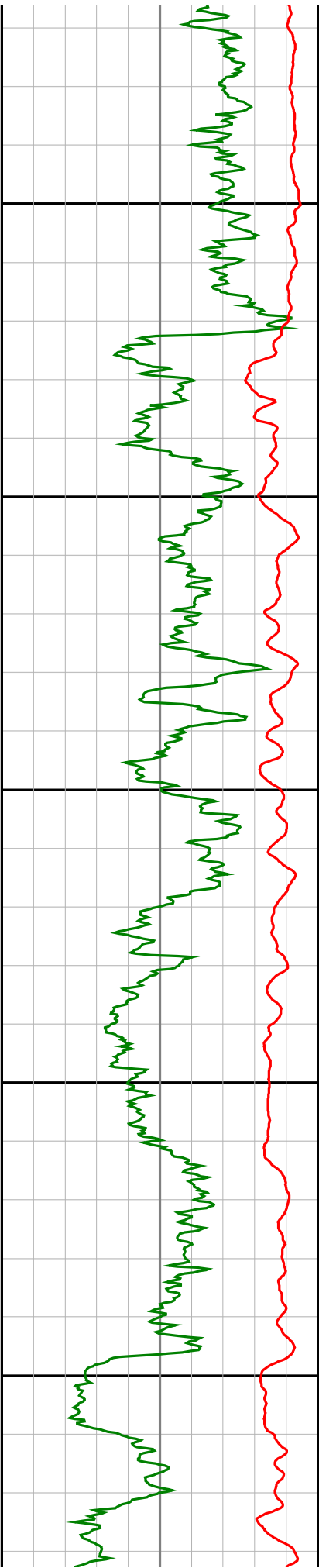
1825

1850









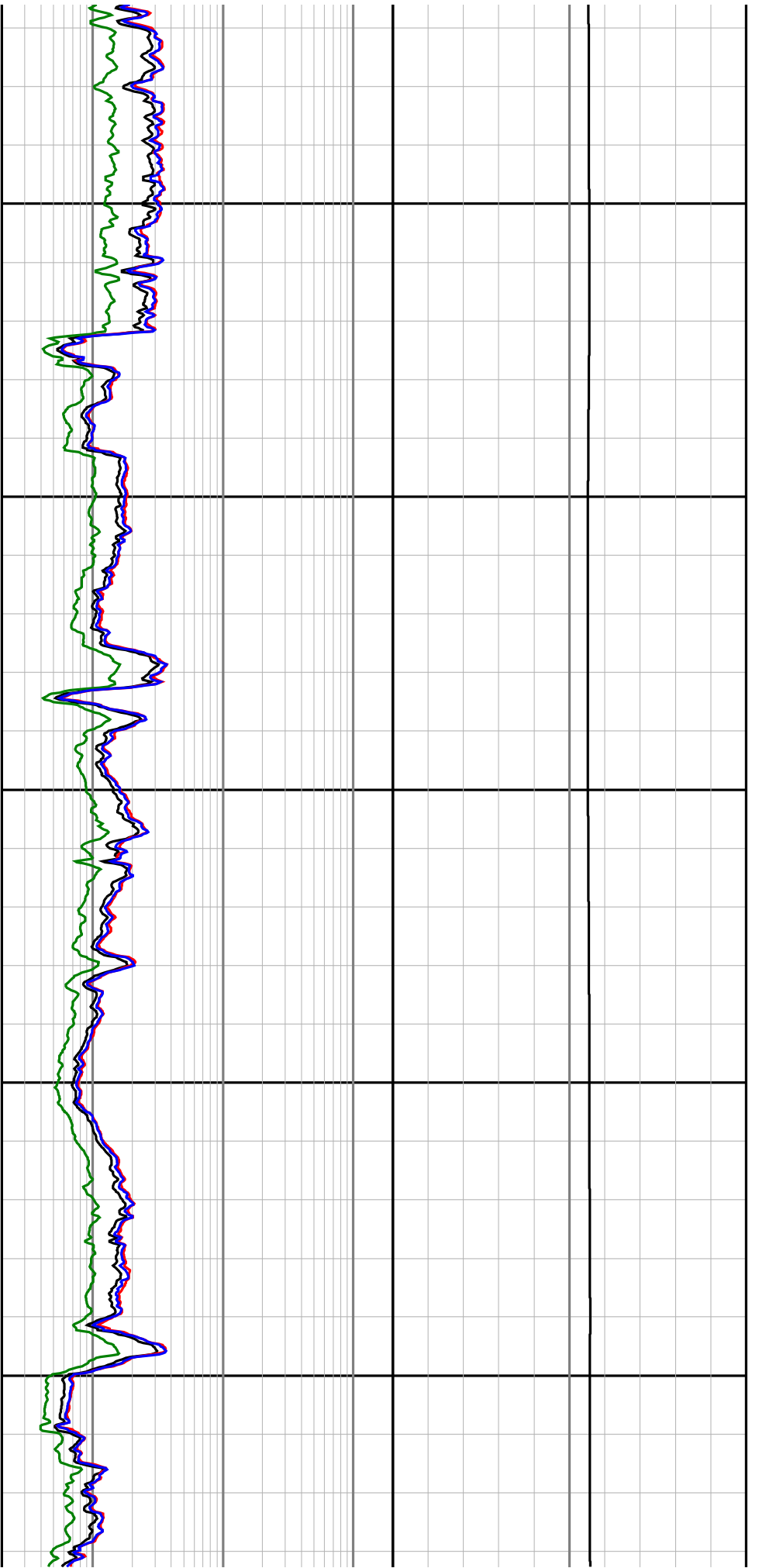
2150

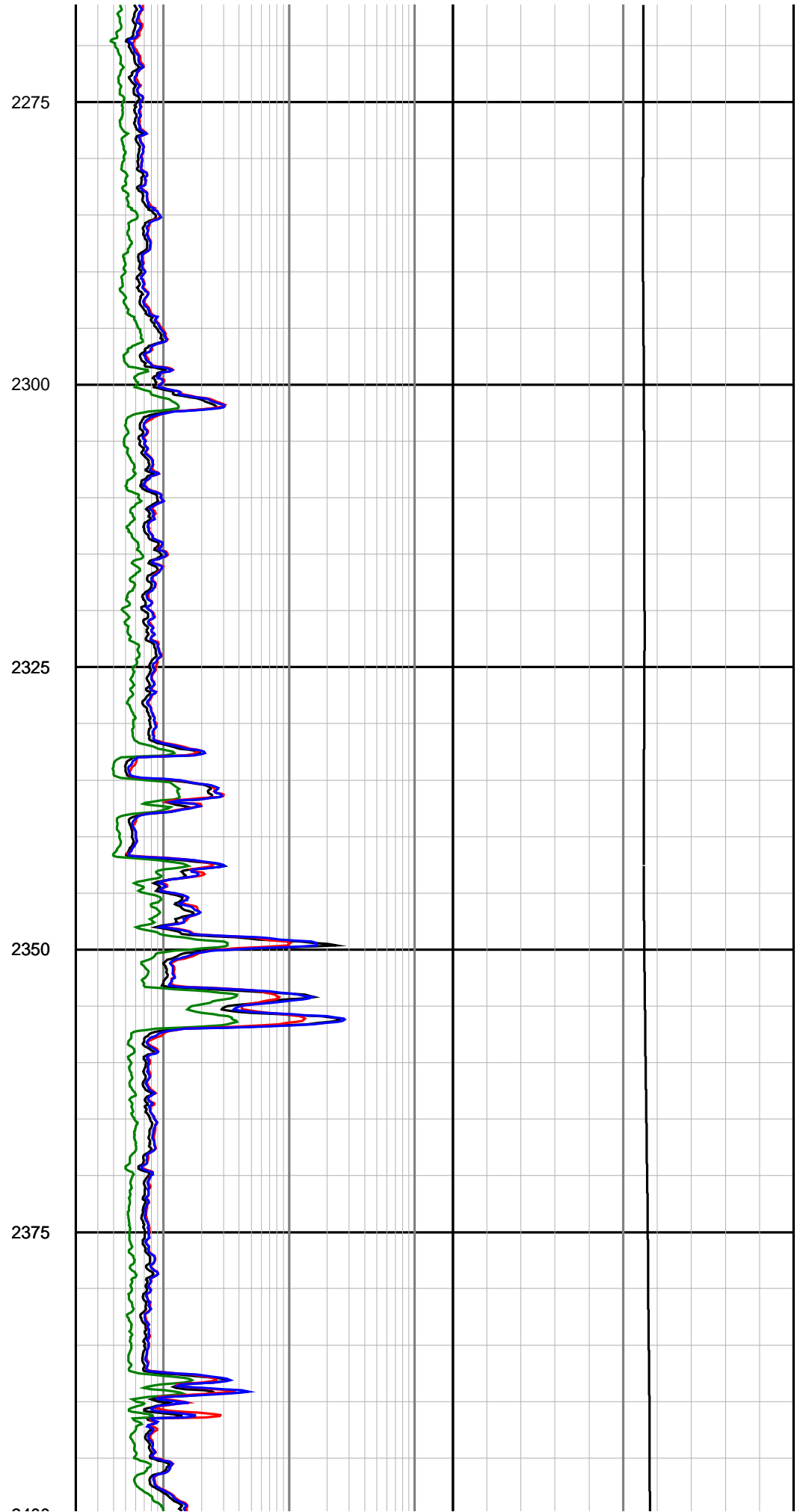
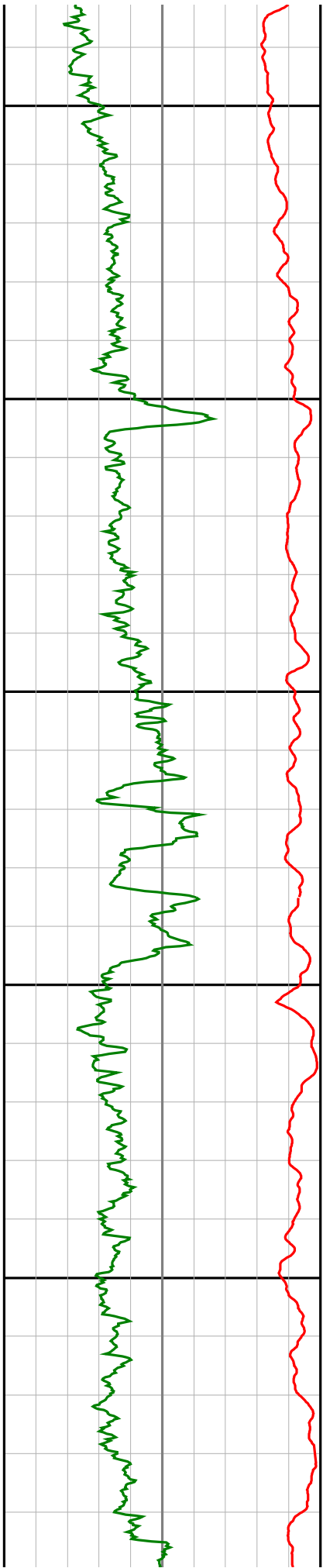
2175

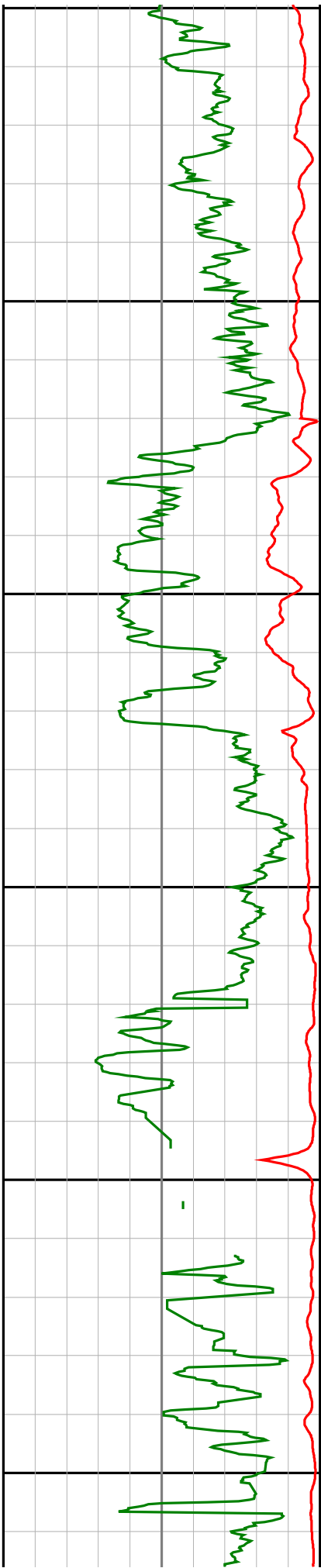
2200

2225

2250







2400

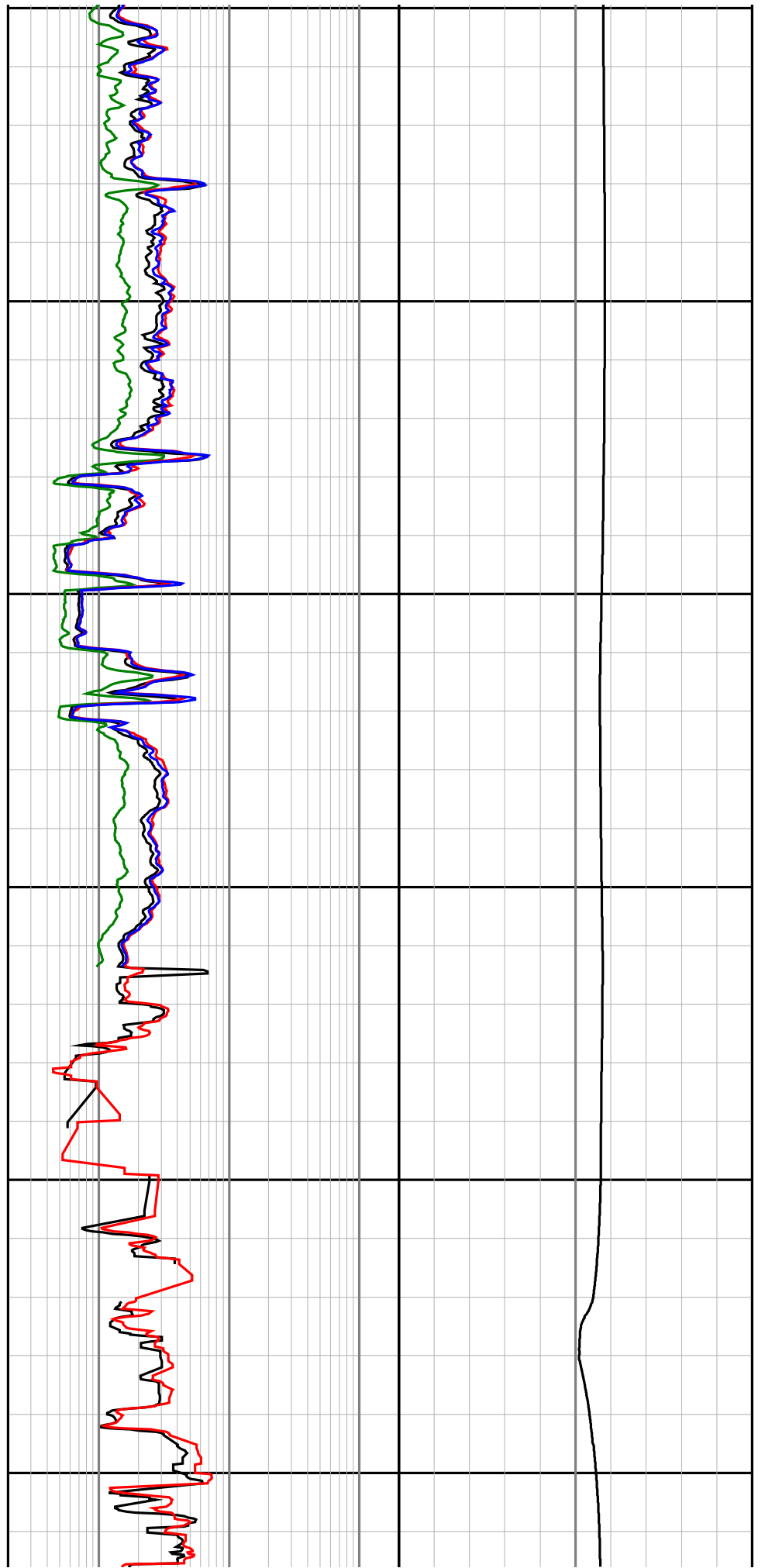
2425

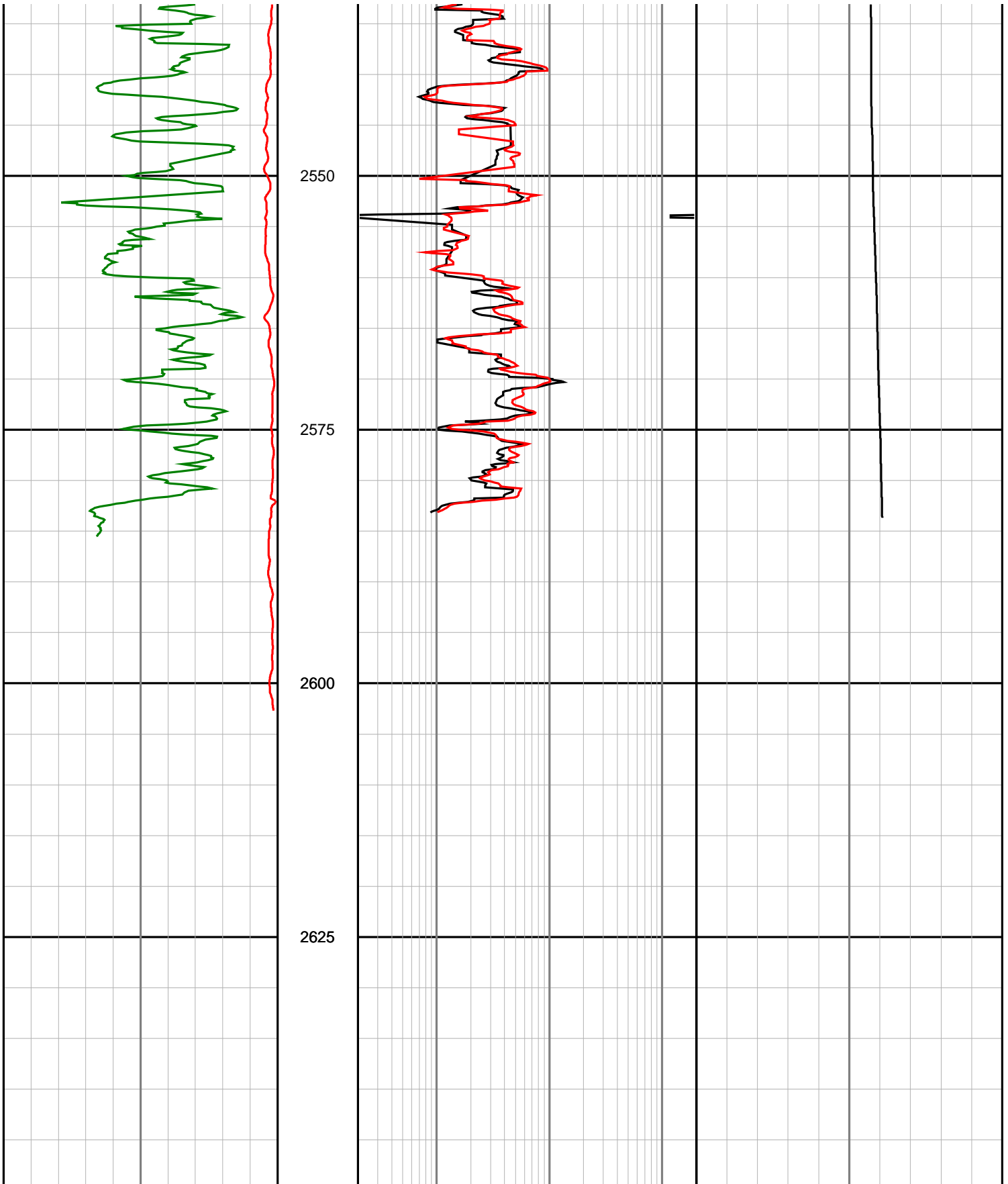
2450

2475

2500

2525





<p>Gamma Ray (SGRC)</p> <p>0 200</p> <p>api</p>	<p>Depth MD</p> <p>1:500</p>	<p>X-Shallow Phase Resistivity (SEXP)</p> <p>0.2 200</p> <p>ohmm</p>	<p>Formation Exposure Time (SFXE)</p> <p>0 100</p> <p>hrs</p>
<p>Rate of Penetration (SROP)</p> <p>500 0</p>		<p>Shallow Phase Resistivity (SESP)</p> <p>0.2 200</p>	<p>Temperature (STEM)</p> <p>0 100</p>

m/hr

ohmm

deg C

--

**Medium Phase Resistivity
(SEMP)**

0.2

200

ohmm

**Deep Phase Resistivity
(SEDP)**

0.2

200

ohmm

--